



ENGLISH LEVELS

We accept levels from B1 (Intermediate) to C2 (Proficiency). We cannot accept Complete Beginners or Beginners on this course. Students whose mother tongue is English are welcome on this course.

ANIMAL HUSBANDRY

Students learn about animal welfare and ethics, animal health and disease, animal behaviour, practical animal husbandry and work experience in the land-based sector.

ANIMAL CARE & BEHAVIOUR

We feel that a connection with animals is enriching, calming and fulfilling. Feeding mealworms to a gecko, trying to exercise a kinkajou, or listening to the calls of our primates – brings something to the lives of the young people who are privileged to be able to enjoy these opportunities.

ANIMAL HANDLING

Students look at wildlife conservation, both in captivity and in the wild, the ethics of keeping animals in captivity, how to health check their pets, and perhaps most enjoyably – take part in animal handling and feeding sessions, e.g. they are able to spend time feeding the white faced owl, cleaning out the Royal Pythons' vivarium, or rearranging the branching in the home of the Siberian Chipmunks.



RESEARCH PROJECT

Working in small groups, students complete daily research tasks based around their chosen topic of interest and linked to a species they have learned about. They then present their findings and conclusions within the class on the last day of the course.

TYPICAL DAY

Zoology and Animal Management students will receive 20 hours of tuition per week. Specialist topics include animal welfare and ethics, practical animal husbandry, animal behaviour, animal classification and conservation.

ZOO VISITS

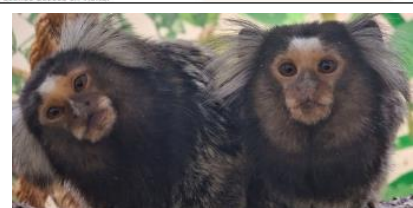
The programme also enables students to look beyond our own school campus. Students will get the opportunity to visit at least two Zoos locally in the duration of their course, where they will have the opportunity to take part in talks and get a unique behind the scenes access on visits.

09.00 ANIMAL HUSBANDRY

10.15 ANIMAL CARE & BEHAVIOUR

11.30 ANIMAL HANDLING

13.30 RESEARCH PROJECT



Wyjątkowy kurs, dla kochających zwierzęta. Na szkolnym terenie mini Zoo z 70 okazami zwierząt. 20 godzin warsztatów tygodniowo, poziom minimalny B1. Także krótka wycieczka i całodzienna w weekendy Opieka 1:5, do 14 osób w klasie, 1-4 osobowe sypialnie, wyżywienie, zajęcia pozalekcyjne,

Kurs może trwać tydzień lub dwa, możesz połączyć go z innym kursem

odbywającym się na tym kampusie

TYGODNIOWY PAKIET £ 1845

Cena pakietu obejmuje także transfery oraz ubezpieczenie

Więcej informacji/ rezerwacje

info@kursyjezykowe.net

isckursyjezykowe@gmail.com

tel 22 8471487 kom 601 36 62 49



ISC S.C.
Małgorzata Goraj-Bryll
info@kursyjezykowe.net
(+48) 22 847 14 87 (+48) 601 36 62 49



www.kursyjezykowe.net